





**Samic & HexSol can meet needs for best designed and high quality fabricated critical equipment**

# Products by Industry Field



## Ethylene Plants

- Transfer Line Exchangers (TLS)
- Linear Quench Exchangers (PQE)
- Secondary Quench Exchangers (SQE)
- Tertiary Quench Exchangers (TQE)

## Fertilizer Plants

- Urea strippers
- Carbamate Condensers
- Urea Scubbers
- W.H.R. System for Phosphate Plants
- Nitric Acid WHB

## Ammonia, Methanol, Hydrogen and Sulphur Plants

- Process Gas Coolers
- Steam Drums
- Steam Superheaters
- Synloop Waste Heat Boiler
- Boiler Feed Water HP Heater

## Refinerie, Oil & Gas and Petrochemical

- Heat Exchangers – Critical Design
- Breech Lock Exchangers
- Bayonet and Hairpin Design H.E.
- Rod Baffles H.E.
- Exotic Materials Units

## Power Plants

- HP and LP Feed Water Pre-heater
- Steam Condensers
- Eco /SH / RH
- Dearator
- Steam Drum
- Integrated C.S.P. System

# *Why our partnership is winning*



Over 50 years in these industry fields

## **Fertilizer Plants**

25+ years experience for Urea Stripper, Carbamate Condenser and Urea Scrubber

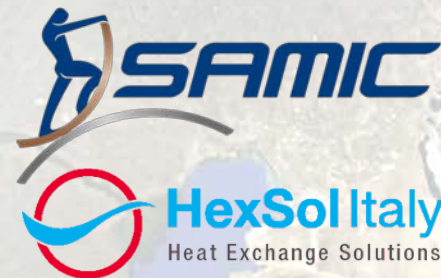
## **Ethylene Plants**

Patented design solutions for Transfer-Line-Exchanger

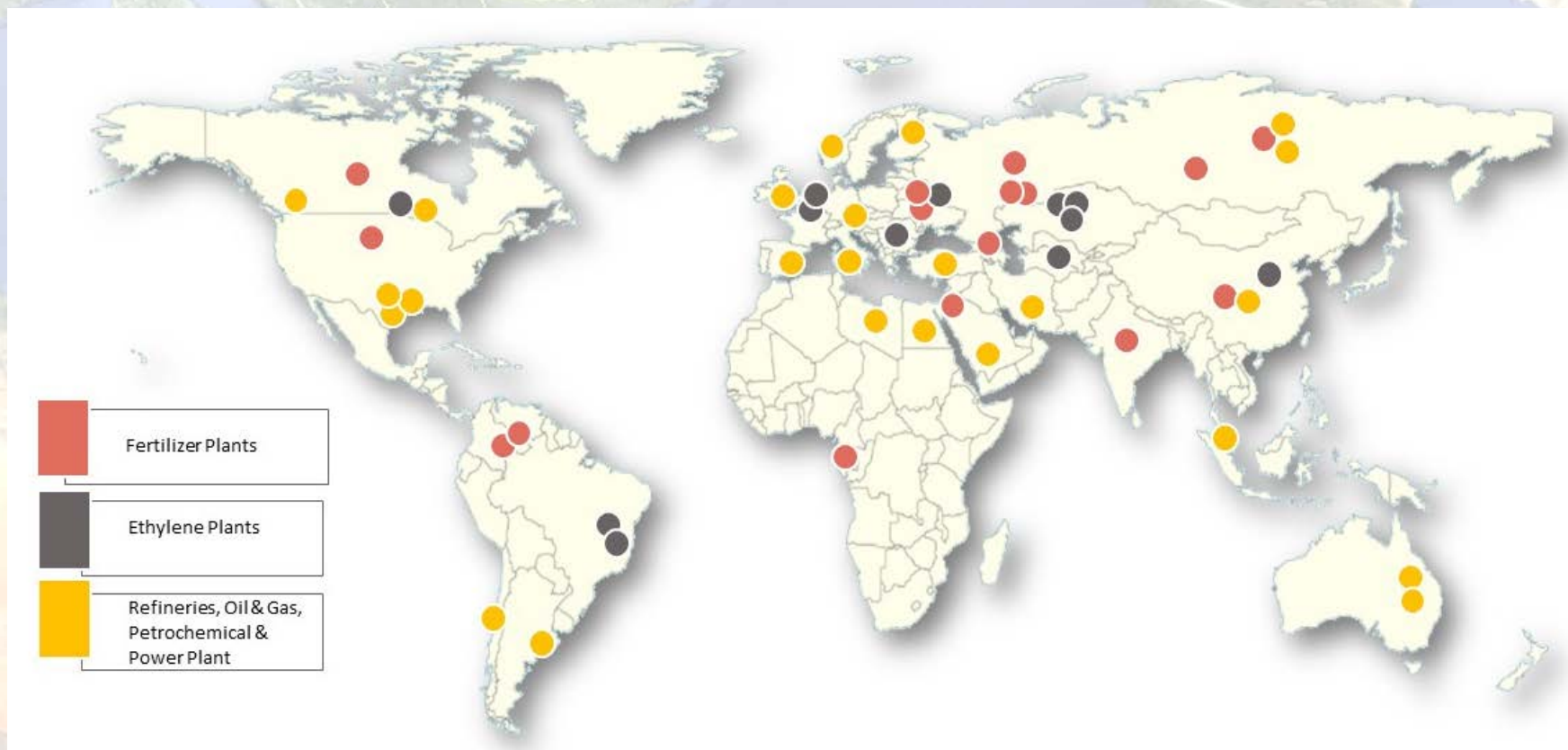
## **Refineries, Oil & Gas, Petrochemical & Power Plant**

S&T heat exchangers in a wide spectrum of metallurgie, design and fabrication solutions

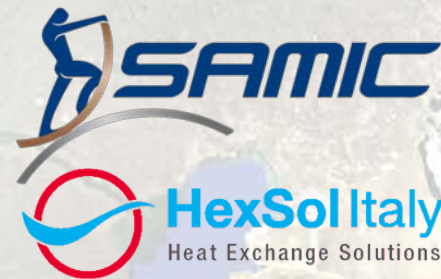
# Contracts awarded



We holds multiple, worldwide references thanks to decades of work experience matured by the company founders



# *Main activities*



○  
Design &  
Construction

○  
Assistance and  
After Sales  
Service

# Engineering, Design and Project Management



## Mechanical 3D Design Software

- Any international design code
- ASME
- AD-Merkblätter
- PED - EN
- GOST

## FEA – CFD – Piping flexibility

- Autodesk Simulation Mechanical
- Autodesk Simulation CFD
- Ansys Mechanical
- Fluent
- CAESAR II
- Inventor 3D

## Thermal Calculations

- HTRI
- Proprietary software for thermo-hydraulic loop of WHB packages

## Inspection, Testing

- NDE 3<sup>o</sup> level to SNT-TC-1<sup>o</sup> / ISO 9712
- ASME authorized
- In-house qualified personnel

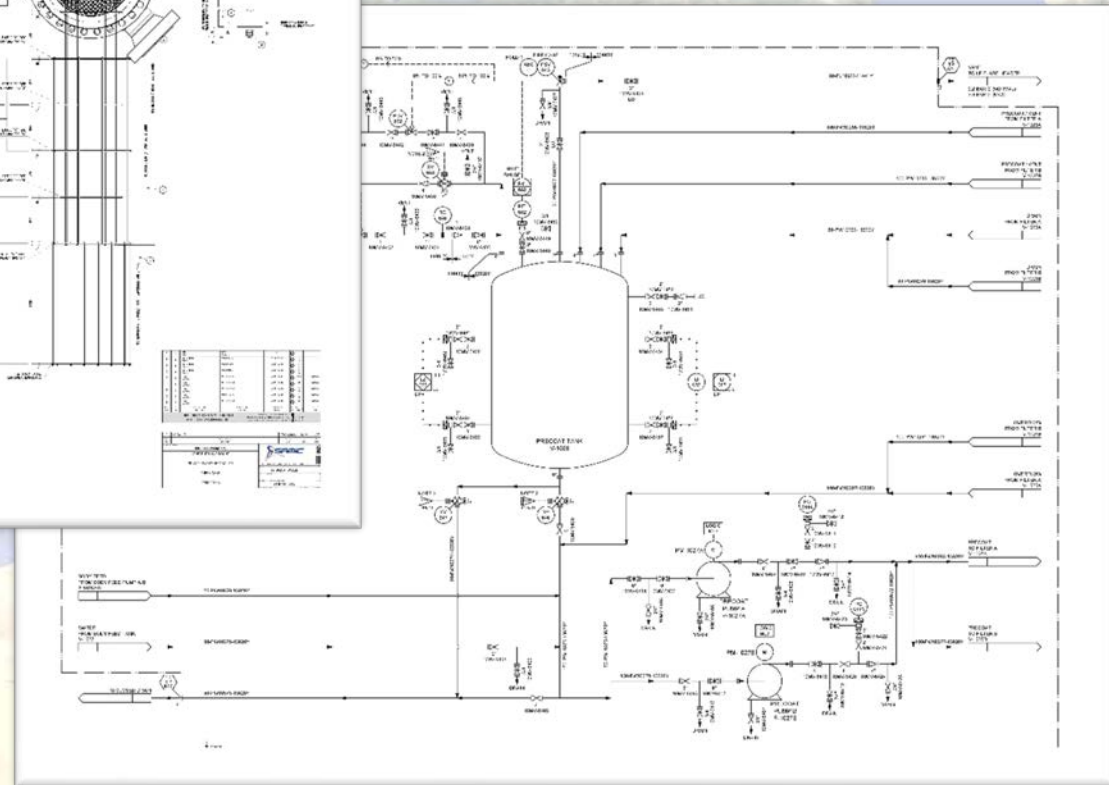
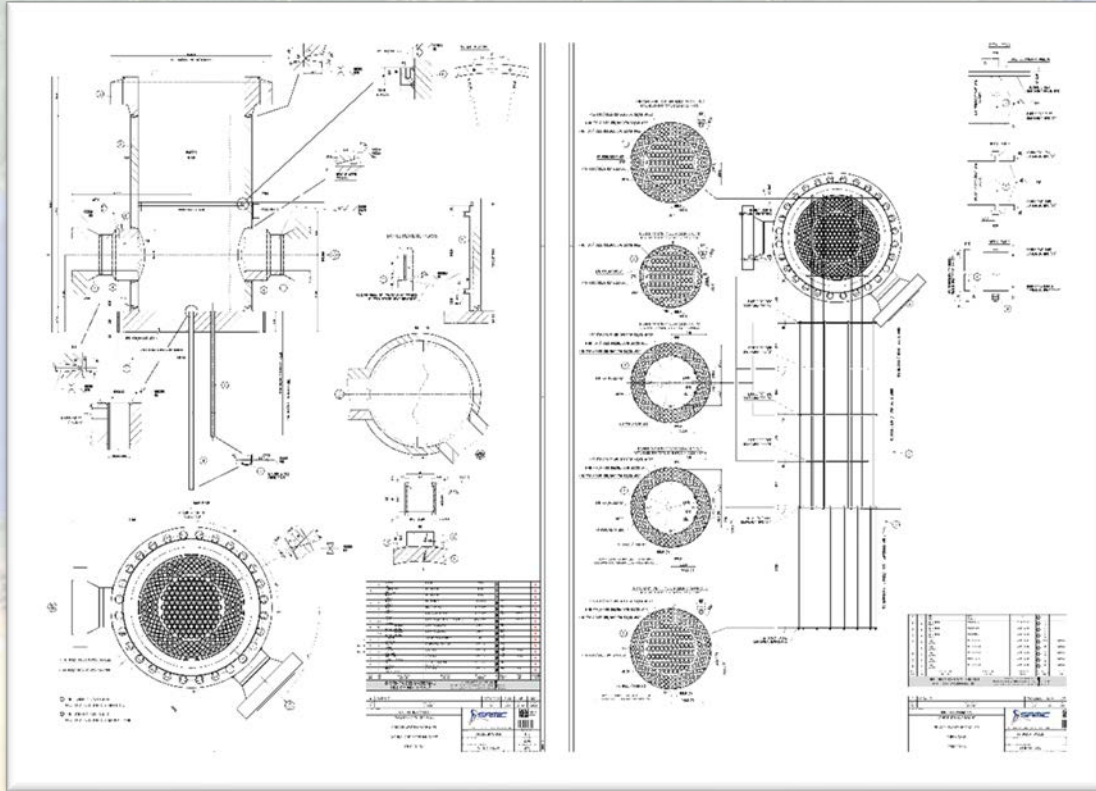
## Project execution

- Issuance of ITP / QCP
- Issuance of fabrication sequence
- Issuance of technical specifications

## After Sales & Site Assistance

- Field erection & supervision
- Trouble shooting
- Assistance in the fields repair
- Spare parts

# Typical Design





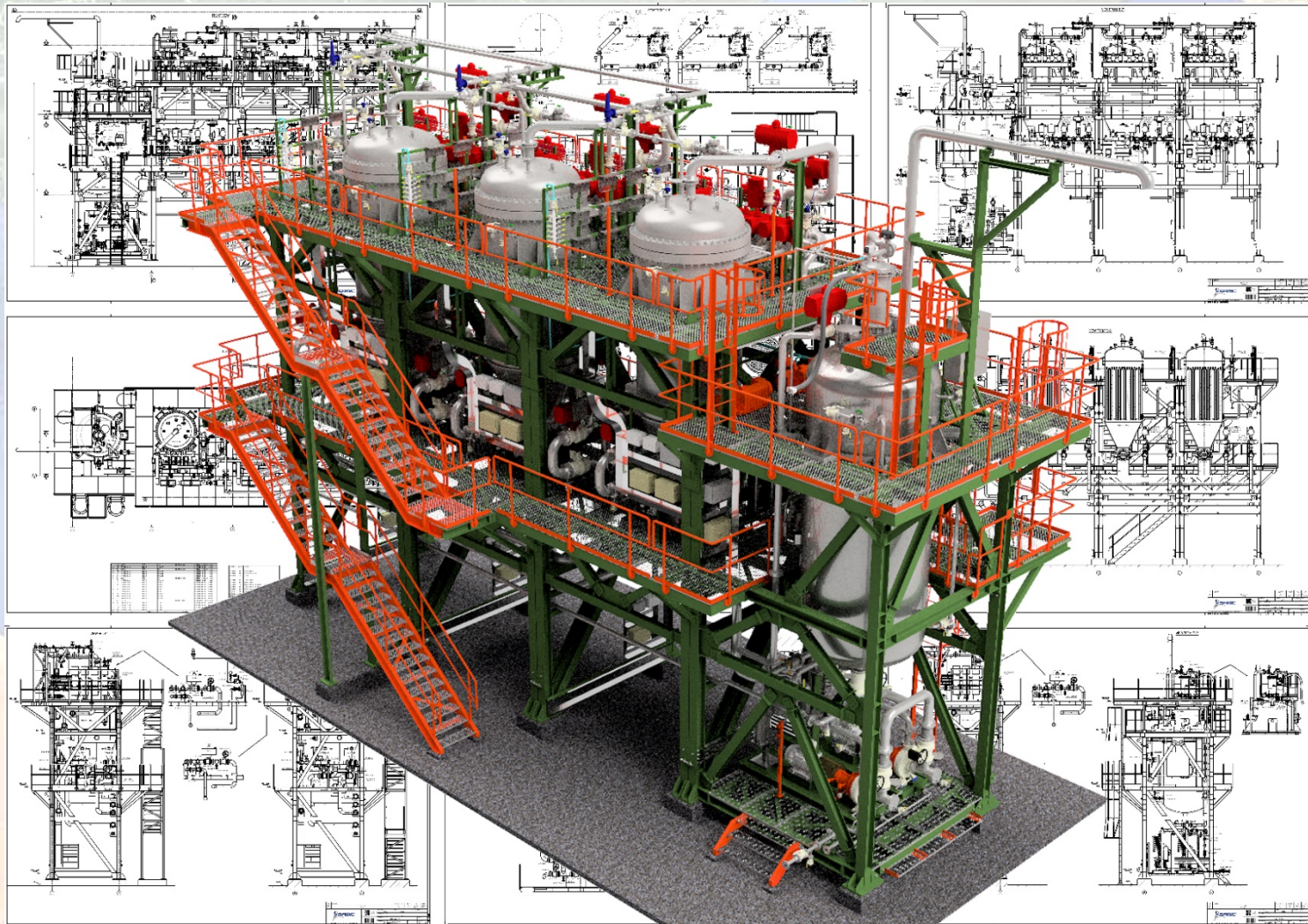
# *Typical Design*



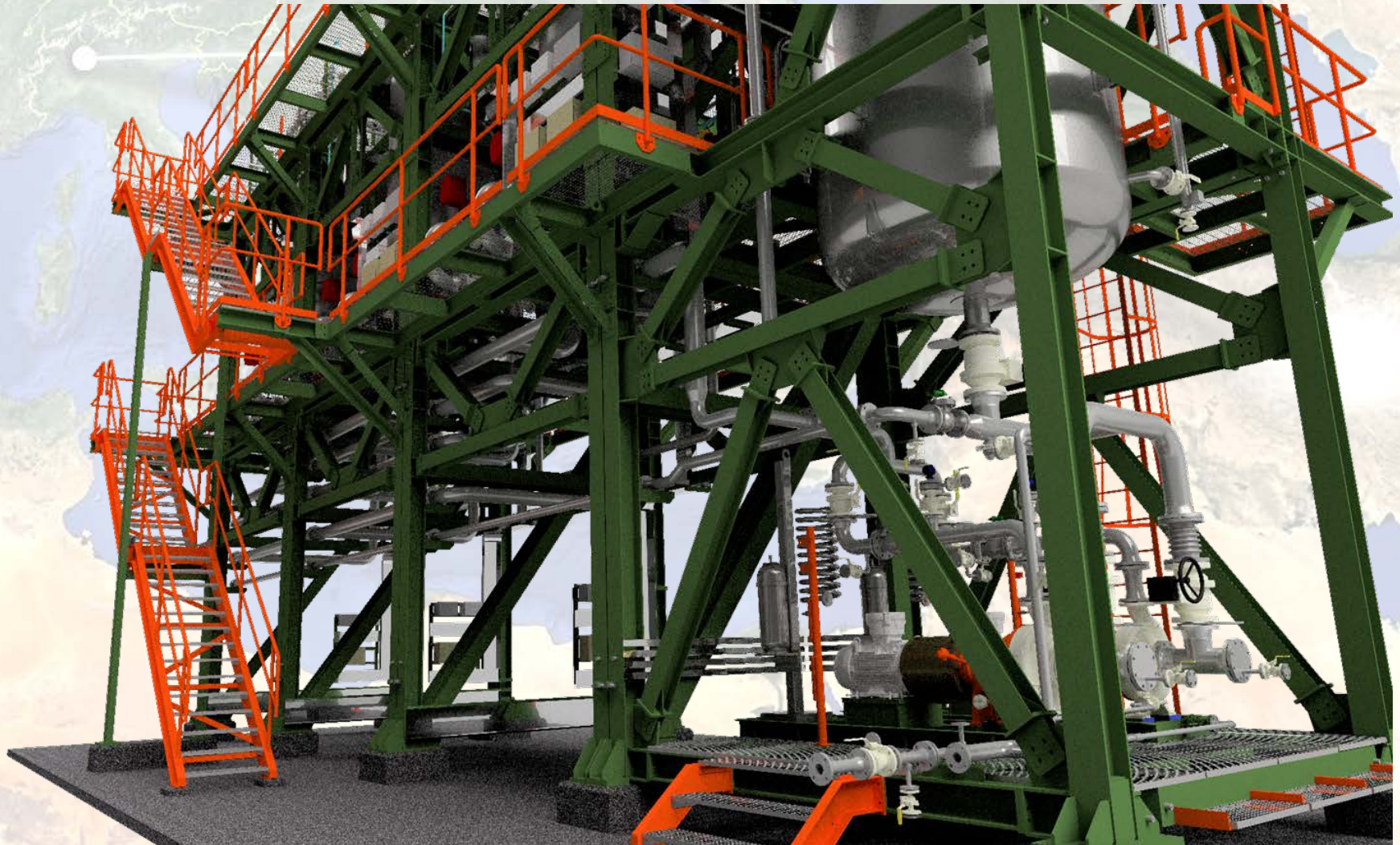
# *Typical Design*



# Typical Design



# *Typical Design*



# Construction



We can supply heat exchangers and pressure vessels in accordance with our own design or to the design provided by the customer,

in a wide range of materials (carbon steel, low alloy steel, stainless steels, nickel alloys, copper alloys, Titanium, Zirconium, etc.)

for any critical application in corrosive environments, high pressure and high temperature.

Status of art fabrication equipment, technologies and process are available, including IBW (Internal Bore Welding) with or without filler materials.

# Location



Samic company is located in the north side of Italy, beside Milan

# Area



# “Samic” Operative Since 1965.

Samic is a Company specialized in building and assembling of industrial plants.

Operative since 1965 with a steady attention to the quality of finished products it has strengthened its structures and steadily invested in the improvement and specialization of its employees.

Samic has modern equipment along with productive areas adequately sized, which enable us to work in vertical phases on large and big elements

and allow Samic to realize sophisticated plants of considerable dimensions.

OVER  
**50**  
YEARS  
1965 • 2016



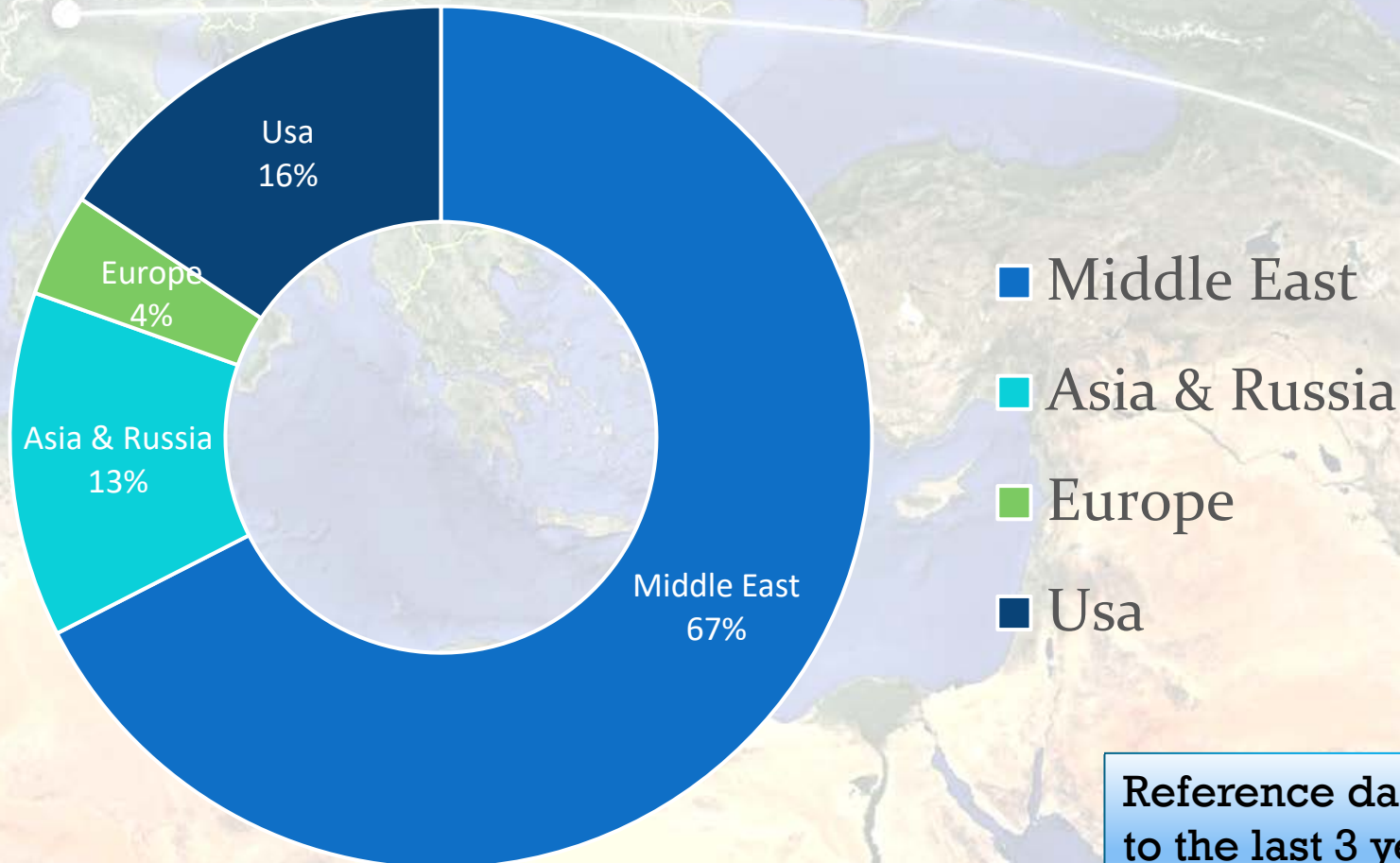
The productive area covers more than 11.000 sqm. on a total area of about 38.000 sqm., which is used as stock for semi-finished and finished materials.

Engineering, quality control, experience, modern equipments & technologies make Samic a remarkable and reliable partner on National and International markets.





# *Products location*



Reference data related  
to the last 3 years.

# Column





# Reactor



# Reactor



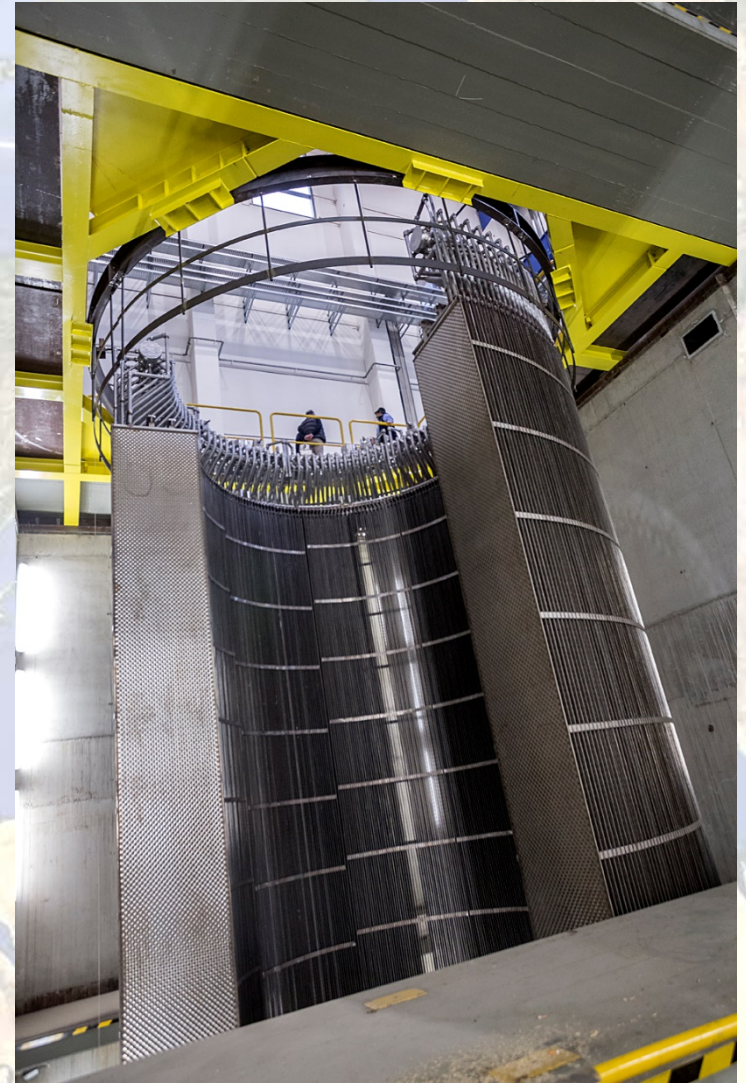
# Feed effluent



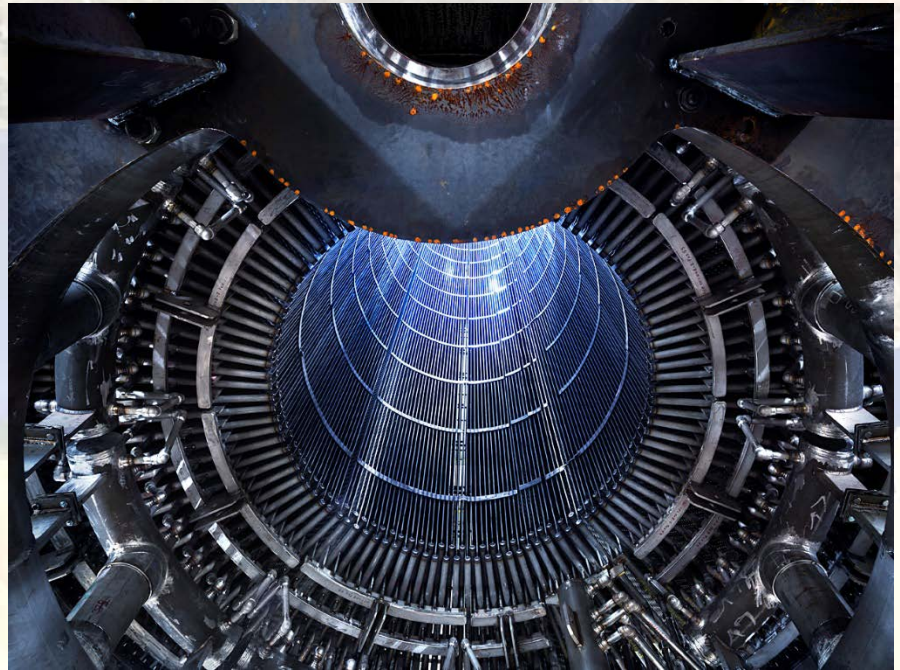
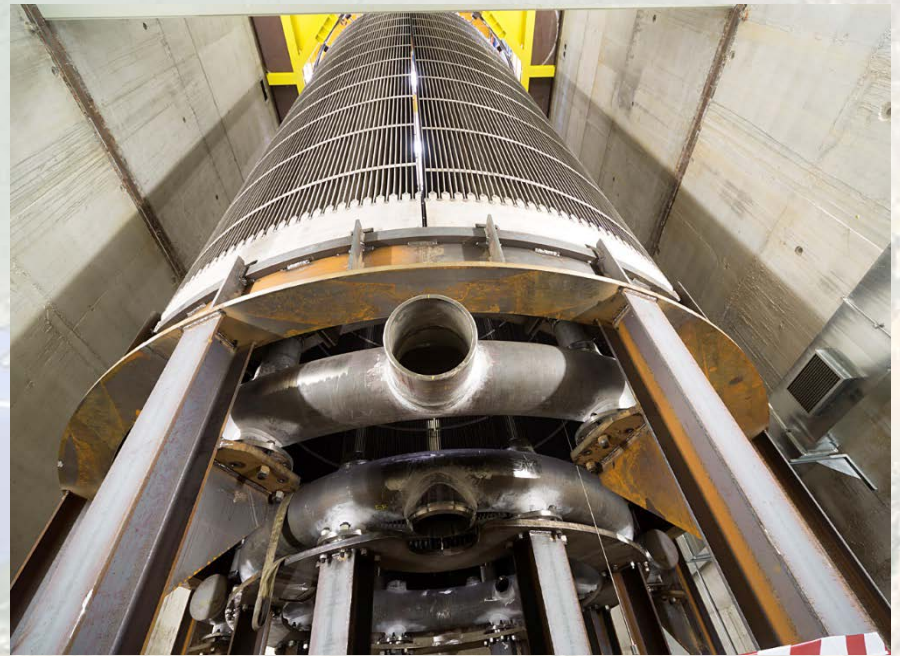
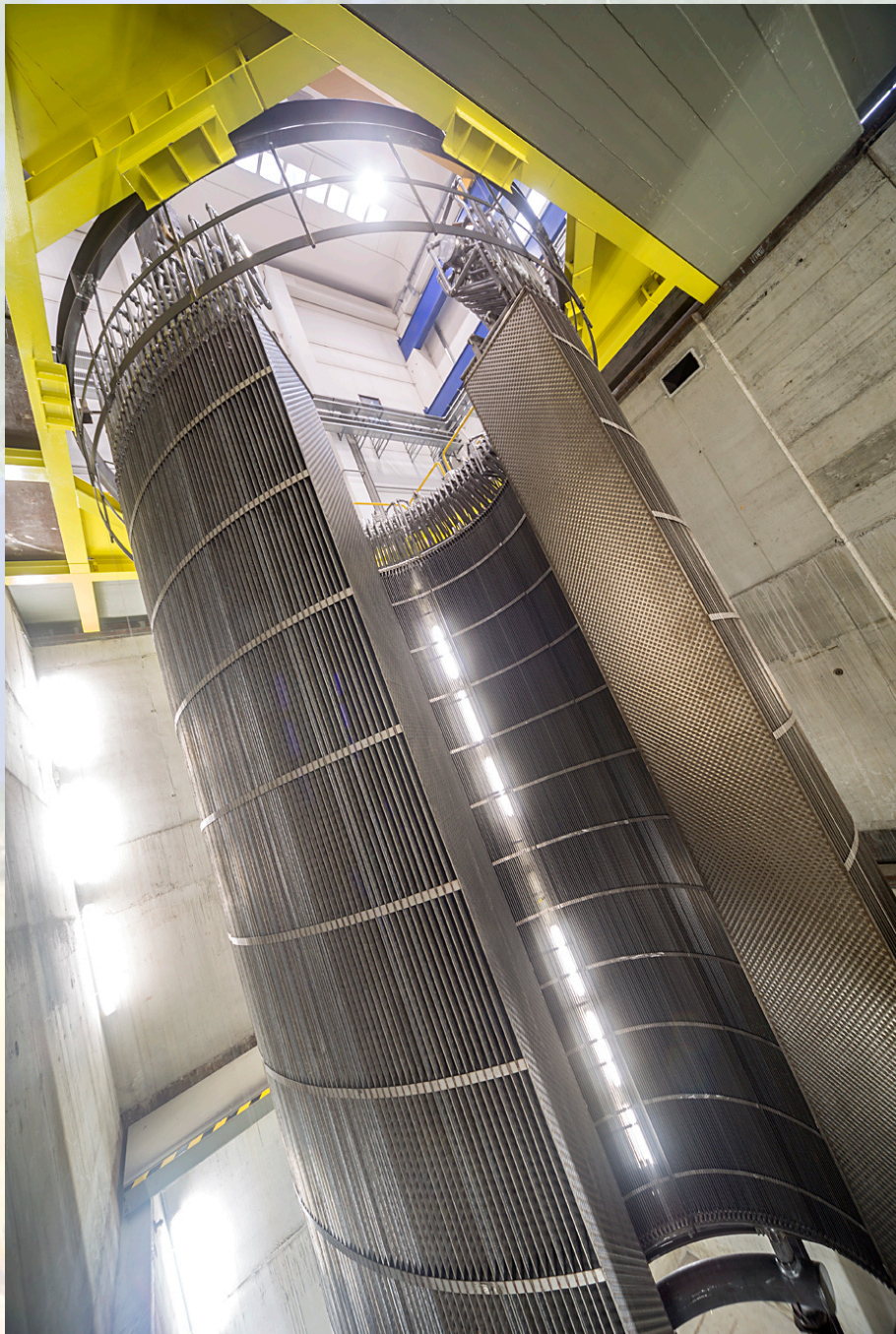
# Saturator

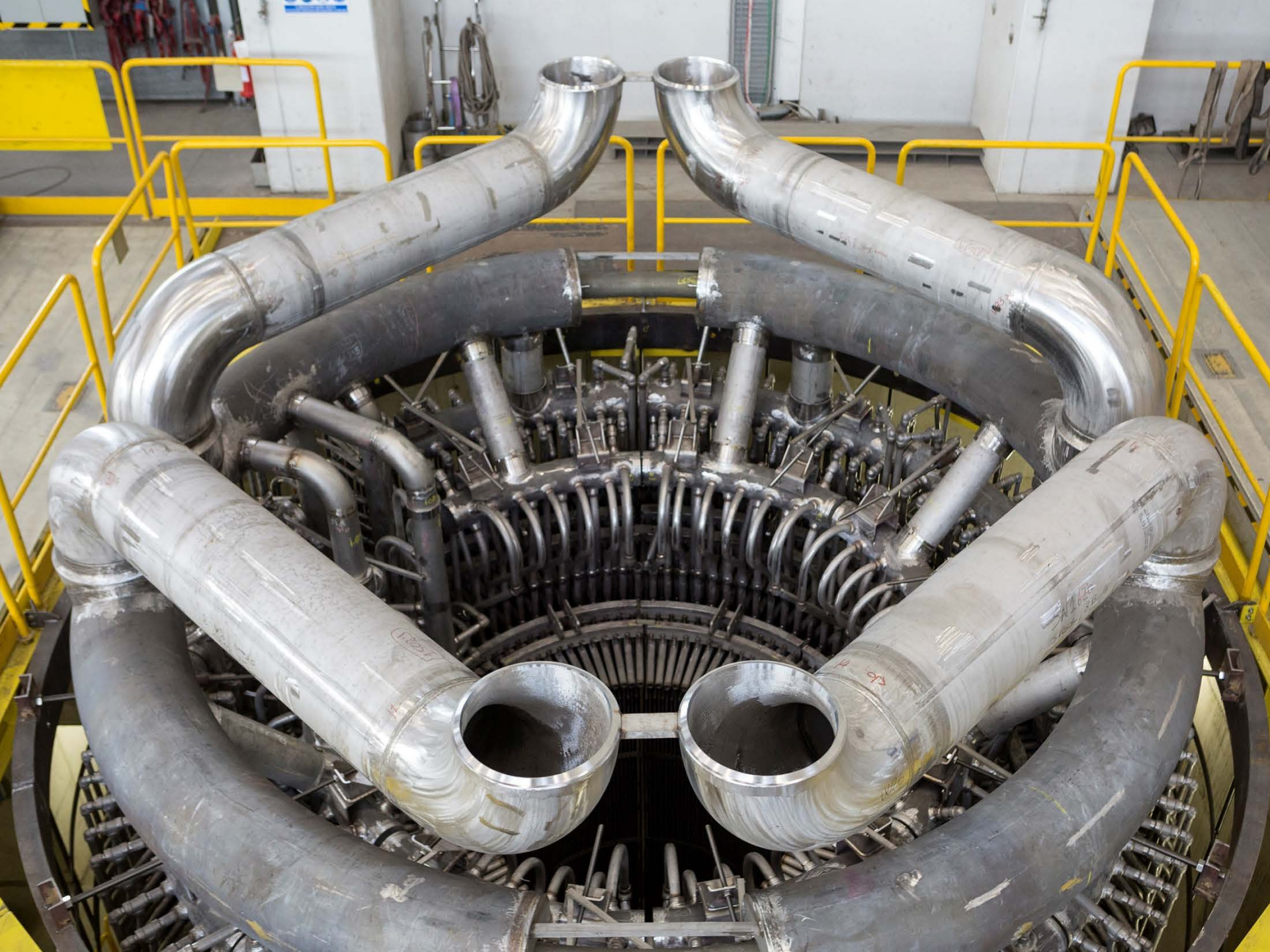


# *Special equipment*



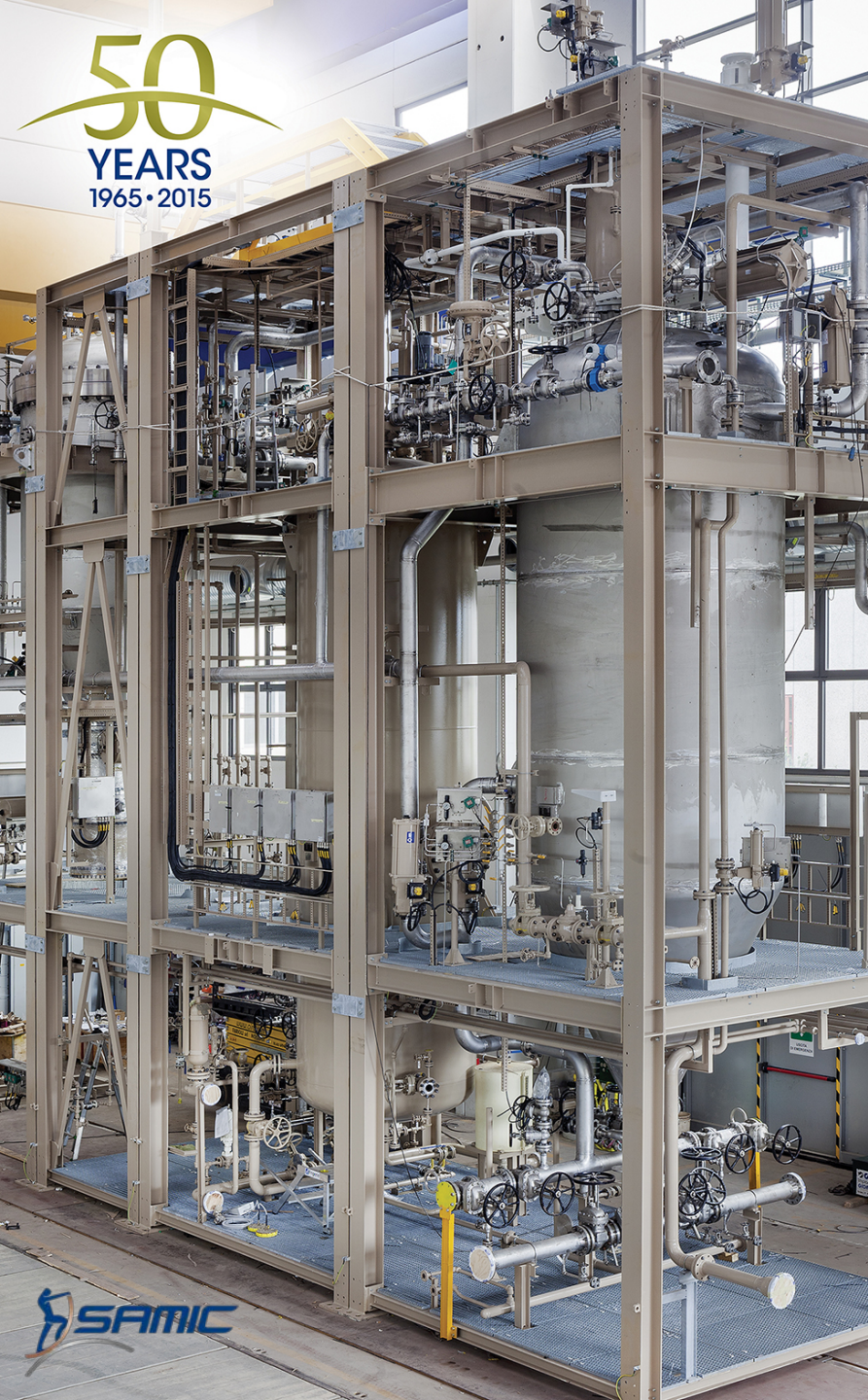








50  
YEARS  
1965 • 2015



Skid



SAMIC



# Skid



# Skid



# Pressure Vessel





# Pressure Vessel



50  
YEARS  
1965 • 2015



# Heat Exchangers

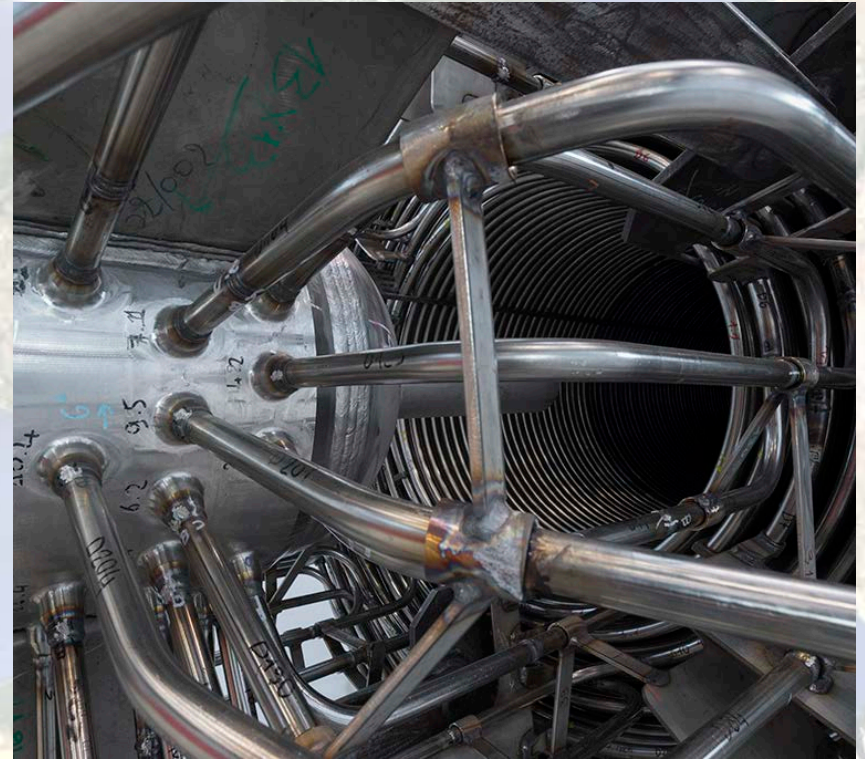
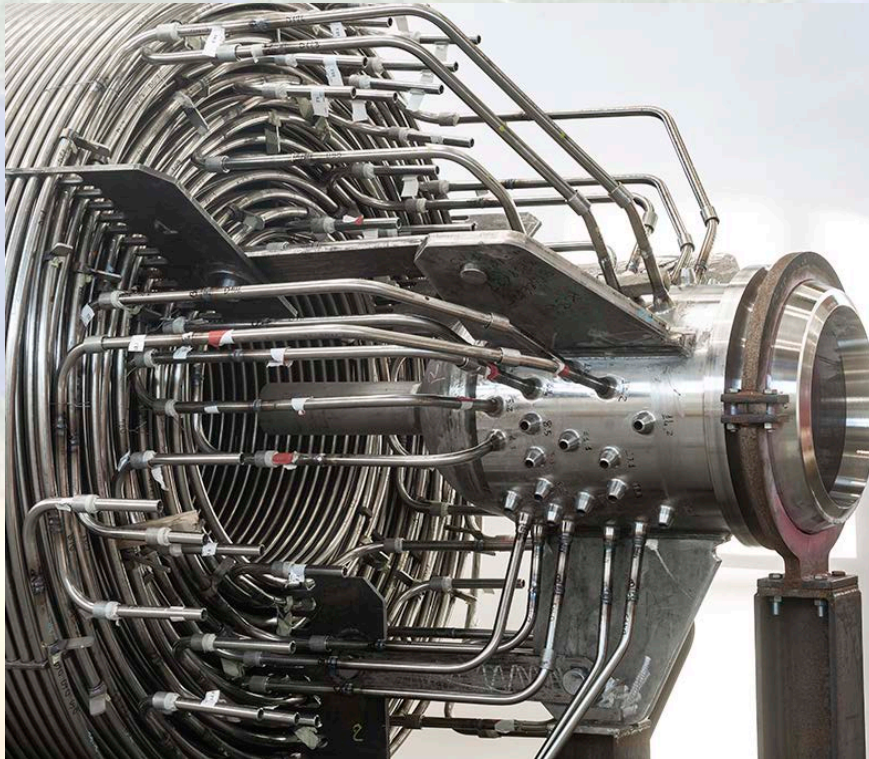




# *Once Through Cooler*



# Once Through Cooler



# Once Through Cooler



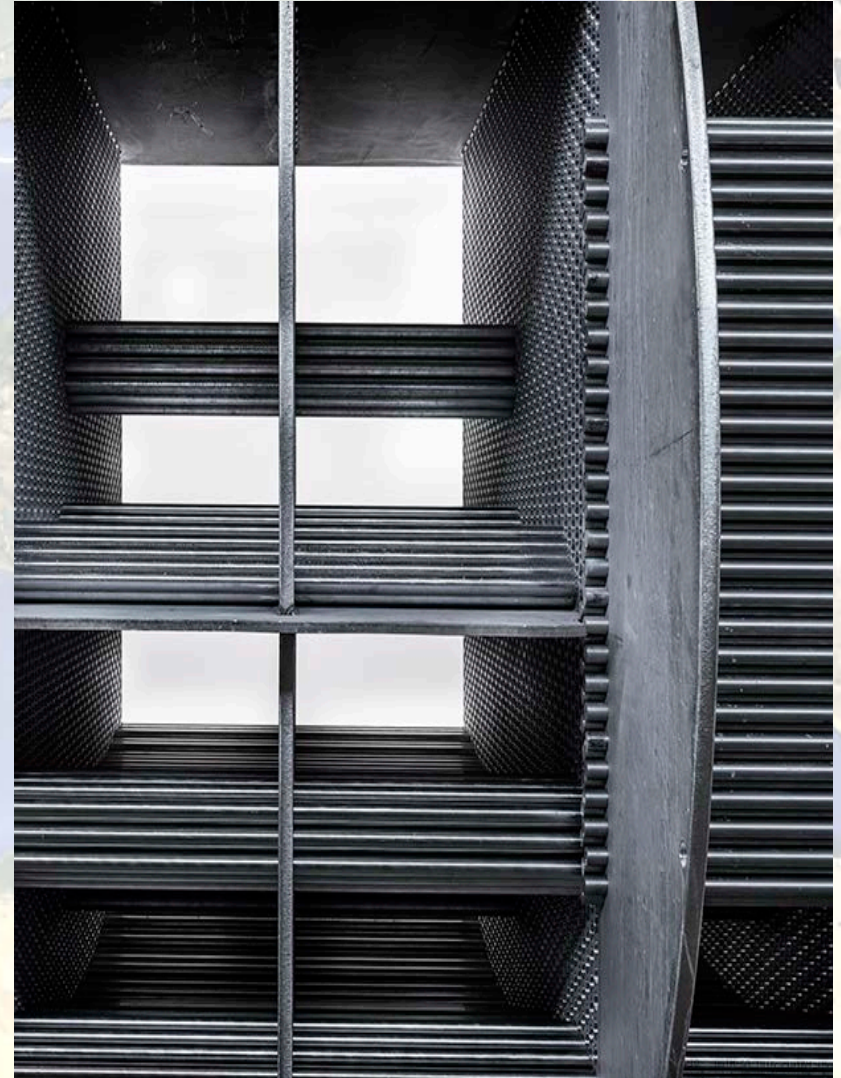
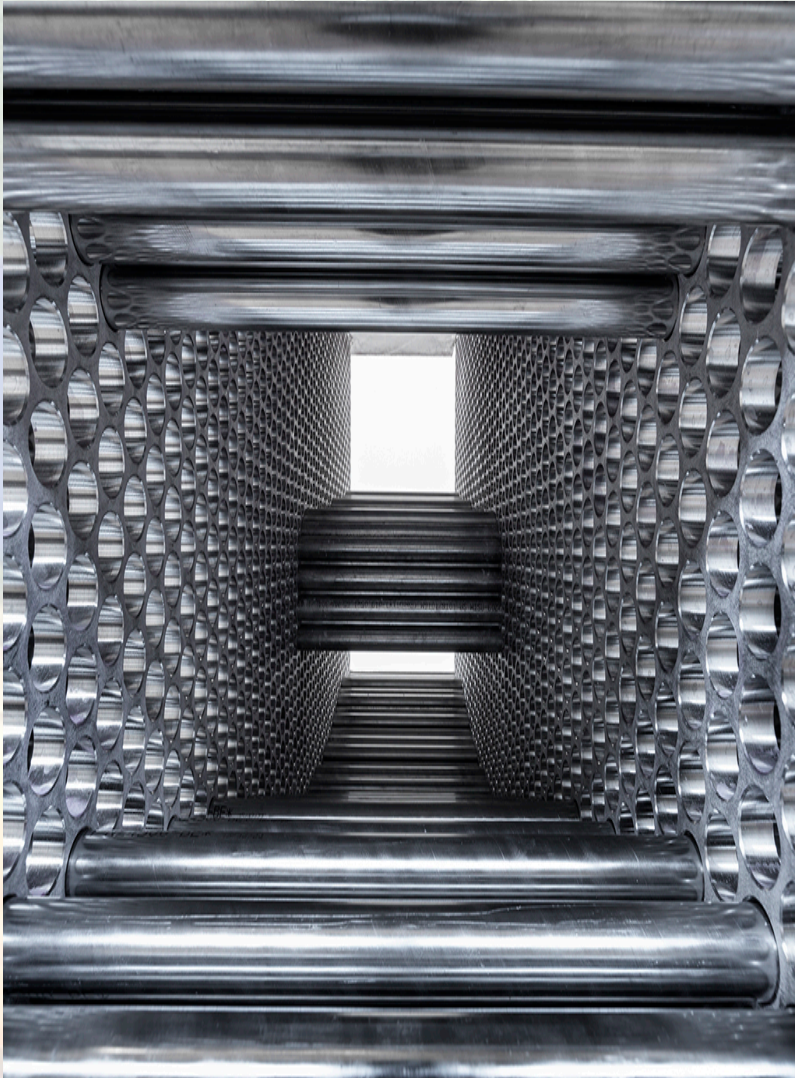
50  
YEARS  
1965-2015



# Heat Exchangers



# Heat Exchangers





# *Tubes-to-Tubesheet Welding*



# Waste Heat Boiler



# Waste Heat Boiler



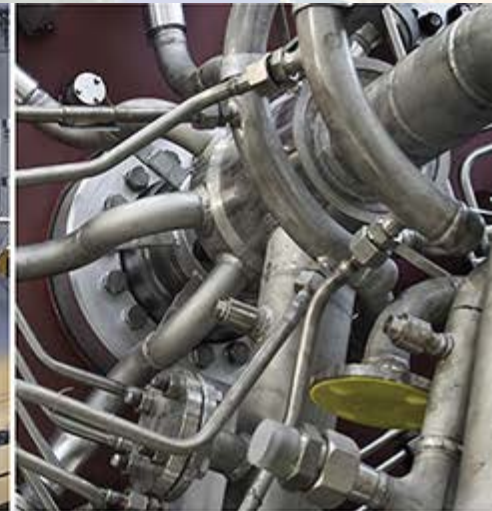
# Ethylene Plant – Transfer Line Exchanger

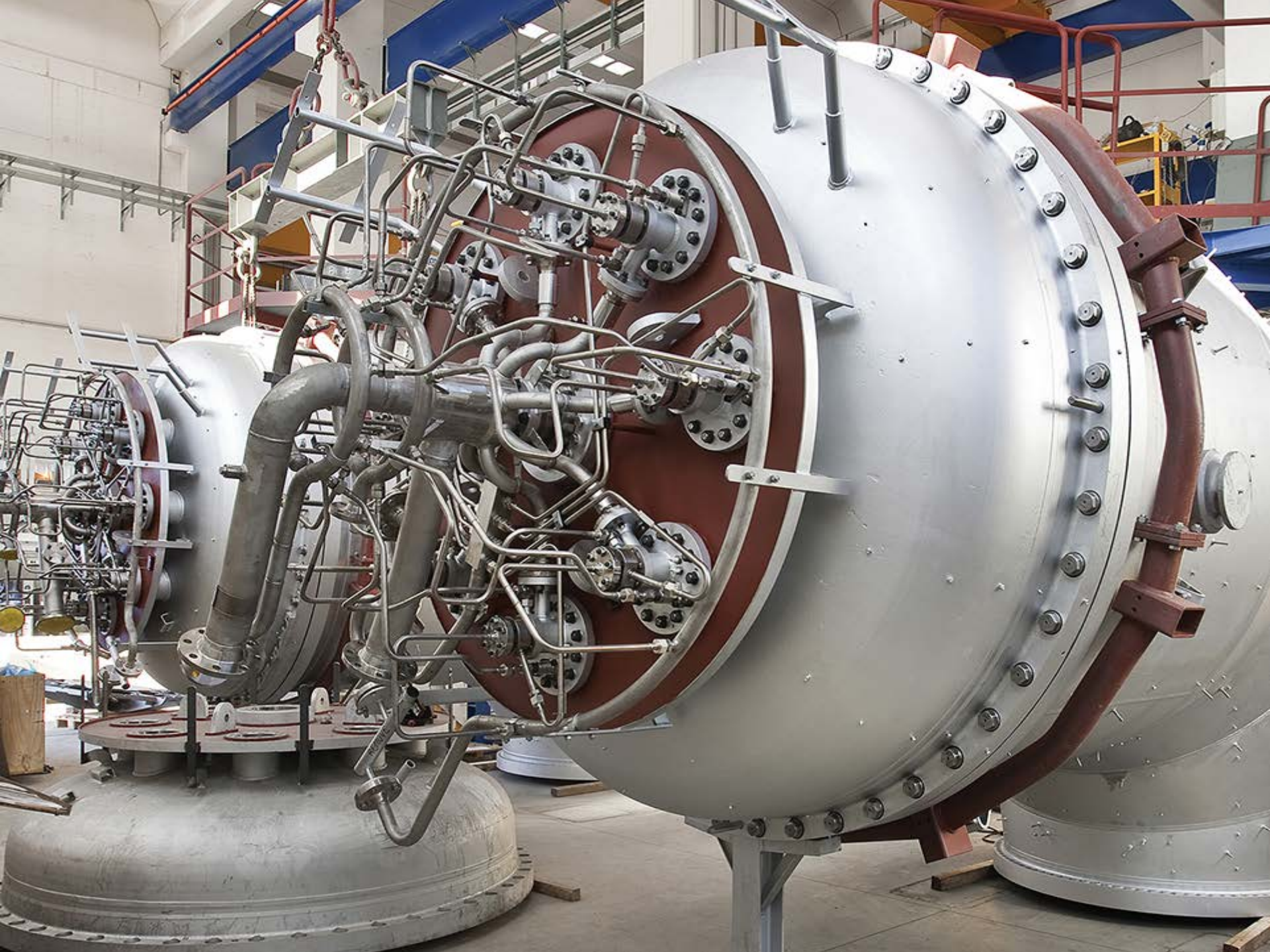


# *Fertilizer: Urea Stripper & HP Scrubber*

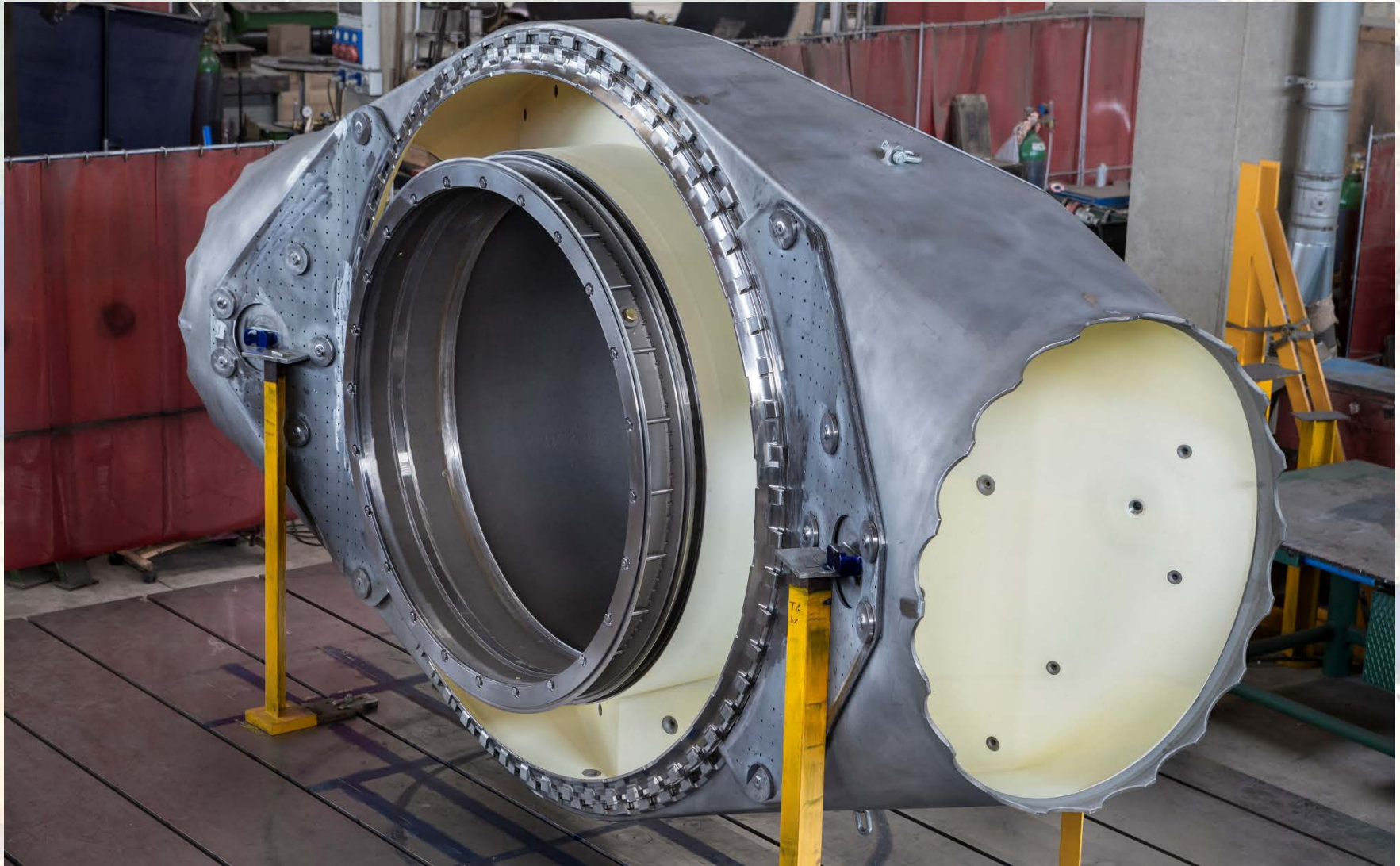


# Gas Turbine Components





# Hot Gas Casing





# Hot Gas Casing



# *Field Assistance and After Sales Service*



Market objective is the long term relations with our Customers and therefore Field Assistance and After Sales Service are an integral part of Company policy and its personnel are committed to satisfy Customers' needs and to a strong personal relationship with customers' site people.

The Company is hence ready to send its personnel to site whenever required.

This may be a one-person supervisor or a more composite staff of qualified and skilled personnel, equipped with all the required tools, automatic welding machines and test units to ensure the performance of the required service quality.

Our Service personnel can also help Customers in taking decisions on equipment efficiency and thereafter in refurbishment procedure aimed at ensuring its longer cost-effective operation or even in detecting its expected remaining service life.



# *Field Assistance and After Sales Service*



# *Field Assistance and After Sales Service*







Thanks for your attention.

GO BEYOND.